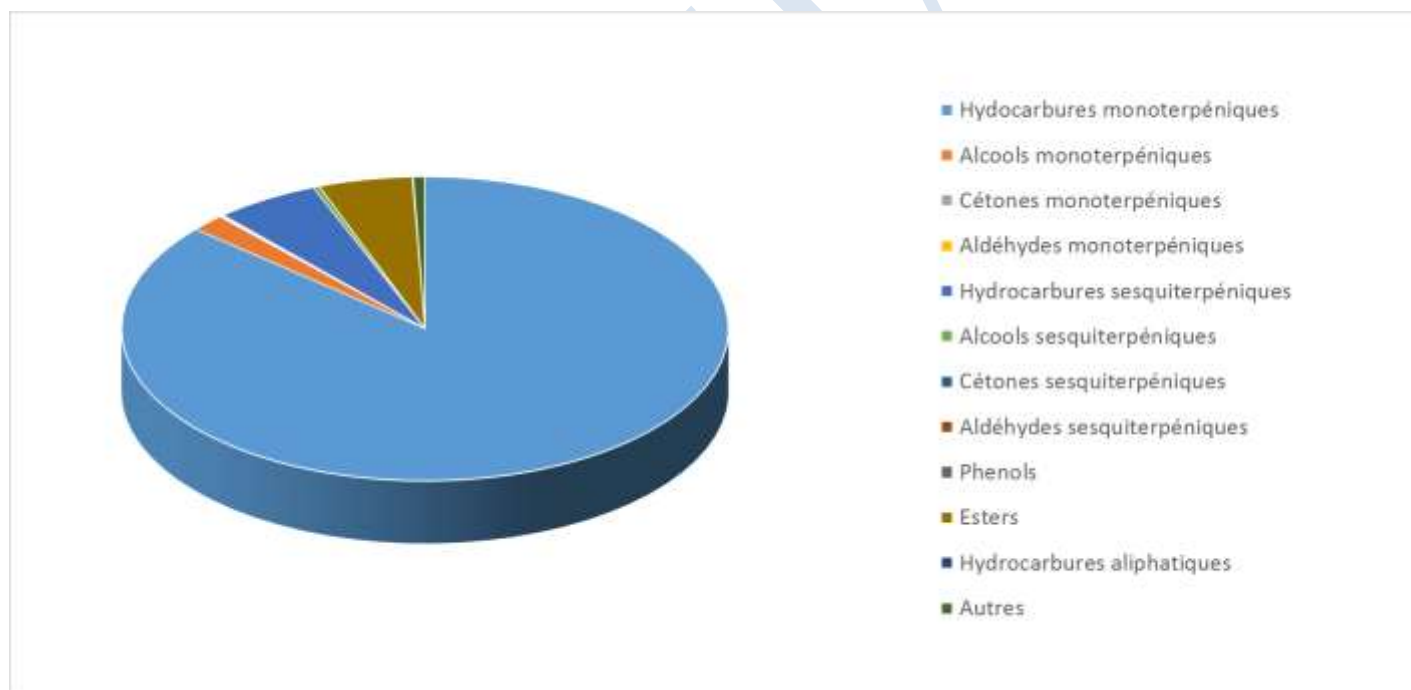


Date : 11/05/2022  
 Référence produit / Product reference : FLE030  
 Huile essentielle de / Essential oil of : Epicea / Common Spruce  
 Numéro de lot / Lot Number : B060522F  
 Densité à 20°C (g/cm<sup>3</sup>) / Density to 20°C (g/cm<sup>3</sup>) : 0.8721  
 Indice de réfraction / Refractive index : 1.47321  
 Pouvoir rotatoire à 20°C / Optical rotation to 20°C : -35.22°  
 Mode de culture / Culture mode : Sauvage / Wild  
 Pays / Country : France  
 Date de production / Production date : 02/2022  
 D.L.U. / Shelf life : 03/2027  
 Mode d'extraction / Extraction mode : Distillation à la vapeur / Steam distillation  
 % Bio / % Organic : 100%  
 Nom Latin / Latin Name : Picea abies  
 Parties utilisées / Used Parts : aiguilles/needles





Molécule	%
SANTENE	0.671
TRICYCLENE	0.818
ALPHA-THUJENE	0.101
ALPHA-PINENE	18.591
BETA-PINENE	14.037
CAMPHENE	8.294
THUJA-2,4(10)-DIENE	0.039
SABINENE	0.410
BETA-MYRCENE	7.494
ALPHA-PHELLANDRENE	0.086
BETA-PHELLANDRENE	2.552
DELTA-3-CARENE	2.779
ALPHA-TERPINENE	0.239
GAMMA-TERPINENE	0.386
TERPINOLENE	0.493
PARA-CYMENE	0.351
<b>LIMONENE *</b>	23.523
1,8-CINEOLE (EUCALYPTOL)	3.535
TRANS-BETA-OCIMENE	0.062
PARA-CYMENENE	0.083
PERYLENE	0.141
ENDO-FENCHOL	0.026
ALPHA-CAMPHOLENAL	0.031
TRANS-SABINOL	0.085
CAMPHRE	1.401
HYDRATE DE CAMPHENE	0.572
CIS-PINOCAMPHONE	0.018
TRANS-PINOCAMPHONE	0.021
PINOCARVONE	0.057
BORNEOL	0.934
TERPINENE-4-OL	0.302
ALPHA-TERPINEOL	0.554
ACETATE D'ALPHA-TERPINYLE	0.614
MYRTENAL	0.083
ACETATE DE FENCHYLE	0.035
THYMOL METHYL ETHER	0.046



ACETATE DE BORNYLE	4.195
ACETATE D'ISOBORNYLE	0.067
ALPHA-LONGIPINENE	0.324
LONGICYCLENE	0.066
LONGIFOLENE	0.674
ALPHA-YLANGENE	0.044
ACETATE DE GERANYLE	0.027
ALPHA-COPAENE	0.072
BETA-ELEMENE	0.093
SIBIRENE	0.134
ALPHA-TRANS-BERGAMOTENE	0.126
BETA-CARYOPHYLLENE	0.532
ALPHA-CARYOPHYLLENE	<b>0.256</b>
OXYDE DE CARYOPHYLLENE	0.040
TRANS-BETA-FARNESENE	0.147
TRANS-MUUROLA-3,5-DIENE	0.030
GAMMA-MUUROLENE	0.147
ALPHA-MUUROLENE	0.247
EPI-ALPHA-MUUROLOL	0.059
ALPHA-MUUROLOL	0.103
TRANS-CADINA-1,(6)4-DIENE	0.076
TRANS-CADINA-1,4-DIENE	0.025
Ar-CURCUMENE	0.029
GERMACRENE D	0.142
GAMMA-CADINENE	0.382
DELTA-CADINENE	0.810
ALPHA-CADINENE	0.061
EPI-ALPHA-CADINOL	0.077
CIS-CALAMENENE	0.091
ALPHA-CALACORENE	0.031
ACIDE DODECANOIQUE	0.038
SPATHULENOL	0.039
CEMBRENE	0.118
<b>Total</b>	<b>98.766</b>

\* = Substance(s) allergène(s) / allergen(s)

\*\* = Substance(s) classée(s) CMR / Substance(s) classified as CMR

