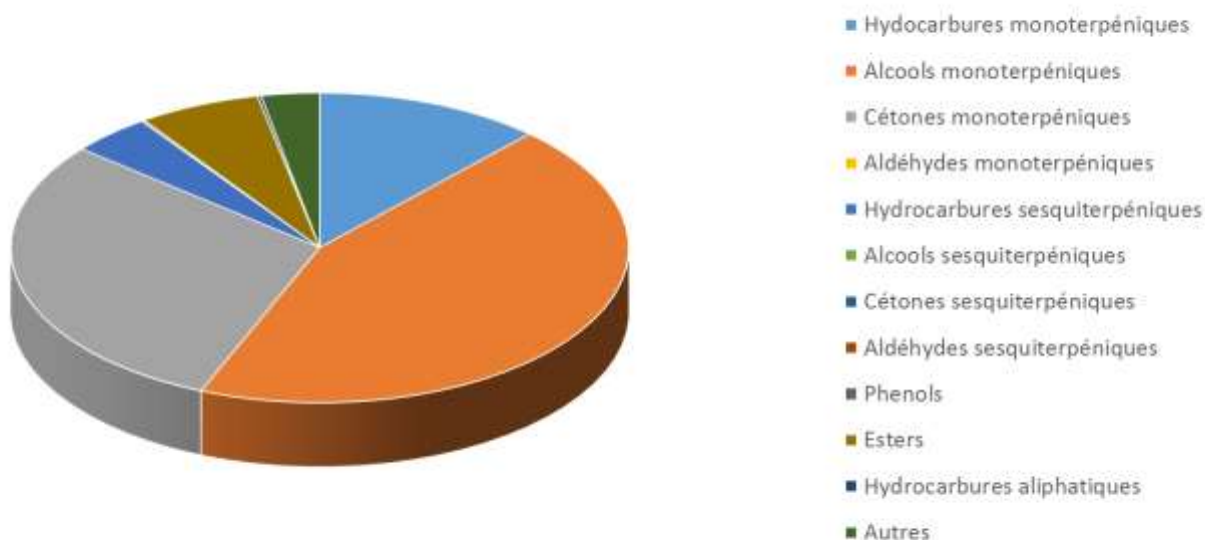


 <b>FLORIHANA</b> JE INTERNATIONAL	<b>ENREGISTREMENT DES BULLETINS          ANALYTIQUES : CHROMATOGRAPHIE          ESSENTIAL OIL CHROMATOGRAPHY          SHEET RECORDS</b>	7-2-ENR-005 v3	Page 1 sur 3
		Date d'application : 01/01/2013	
		Date de révision : 15/04/2022	

Date : 03/10/2022  
 Référence produit / Product reference : FLE058  
 Huile essentielle de / Essential oil of : Menthe Poivrée / Peppermint  
 Numéro de lot / Lot Number : AX210922F  
 Densité à 20°C (g/cm<sup>3</sup>) / Density to 20°C (g/cm<sup>3</sup>) : 0.9034  
 Indice de réfraction / Refractive index : 1.46016  
 Pouvoir rotatoire à 20°C / Optical rotation to 20°C : -24.0°  
 Mode de culture / Culture mode : Cultivé / Cultivated  
 Pays / Country : France  
 Date de production / Production date : 09/2022  
 D.L.U. / Shelf life : 10/2027  
 Mode d'extraction / Extraction mode : Distillation à la vapeur / Steam distillation  
 % Bio / % Organic : 100%  
 Nom Latin / Latin Name : Mentha Piperita  
 Parties utilisées / Used Parts : Plante fleurie / Flowering plant





Molécule	%
2,5-DIETHYL-TETRAHYDROFURANE	0.021
ALPHA-THUJENE	0.037
ALPHA-PINENE	0.877
BETA-PINENE	1.216
CAMPHENE	0.028
THUJA-2,4(10)-DIENE	0.026
SABINENE	0.466
1-OCTEN-3-OL	0.029
MYRCENE	0.221
3-OCTANOL	0.190
PARA-MENTHA-1(7)8-DIENE	0.015
ALPHA-PHELLANDRENE	0.029
BETA-PHELLANDRENE	0.045
ALPHA-TERPINENE	0.219
GAMMA-TERPINENE	0.430
TERPINOLENE	0.120
PARA-CYMENE	0.208
<b>LIMONENE *</b>	2.361
1,8-CINEOLE (EUCALYPTOL)	5.329
TRANS-BETA-OCIMENE	<b>0.047</b>
CIS-BETA-OCIMENE	0.163
CIS-HYDRATE DE SABINENE	0.317
2-METHYL-BUTANOATE DE 3-METHYLBUTYLE	0.009
2-METHYL-BUTYRATE DE 2-METHYLBUTYLE	0.08
3-METHYL-BUTYRATE DE 2-METHYLBUTYLE	0.023
<b>LINALOL *</b>	0.166
ACETATE D'OCTAN-3-YLE	0.014
CIS-PARA-MENTH-2-EN-1-OL	0.04
TRANS-PARA-MENTH-2-EN-1-OL	0.031
MENTHONE	24.162
MENTHOFURANE	3.007
ISO-MENTHONE	3.949
NEO-MENTHOL	3.45
TRANS-SABINOL	0.027
ISOPULEGOL	0.123
BORNEOL	0.028



ISO-PULEGONE	0.077
MENTHOL	39.557
ISO-MENTHOL	0.037
NEO-ISO-MENTHOL	0.093
ACETATE DE NEO-MENTHYLE	0.264
ACETATE D'ISO-MENTHYLE	0.200
ACETATE DE MENTHYLE	5.709
ALPHA-TERPINEOL	0.26
VALERATE DE CIS-3-HEXENYLE	0.042
PULEGONE	0.946
CARVONE	0.058
PIPERITONE	0.379
DIHYDROEDULAN II	0.037
ACETATE D'ISO DIHYDROCARVEYLE	0.010
BICYCLOELEMENE	0.033
BETA-ELEMENE	0.091
ALPHA-COPAENE	0.026
BETA-BOURBONENE	0.141
BETA-CARYOPHYLLENE	<b>2.329</b>
ALPHA-CARYOPHYLLENE	0.065
BETA-COPAENE	0.043
TRANS-BETA-FARNESENE	0.206
GAMMA-MUUROLENE	0.023
GERMACRENE D	0.996
BICYCLOGERMACRENE	0.153
DELTA-CADINENE	0.06
SPATHULENOL	0.012
OXYDE DE CARYOPHYLLENE	0.043
VIRIDIFLOROL	0.1
<b>Total</b>	<b>99.493</b>

\* = Substance(s) allergène(s) / allergen(s)

\*\* = Substance(s) classée(s) CMR / Substance(s) classified as CMR

