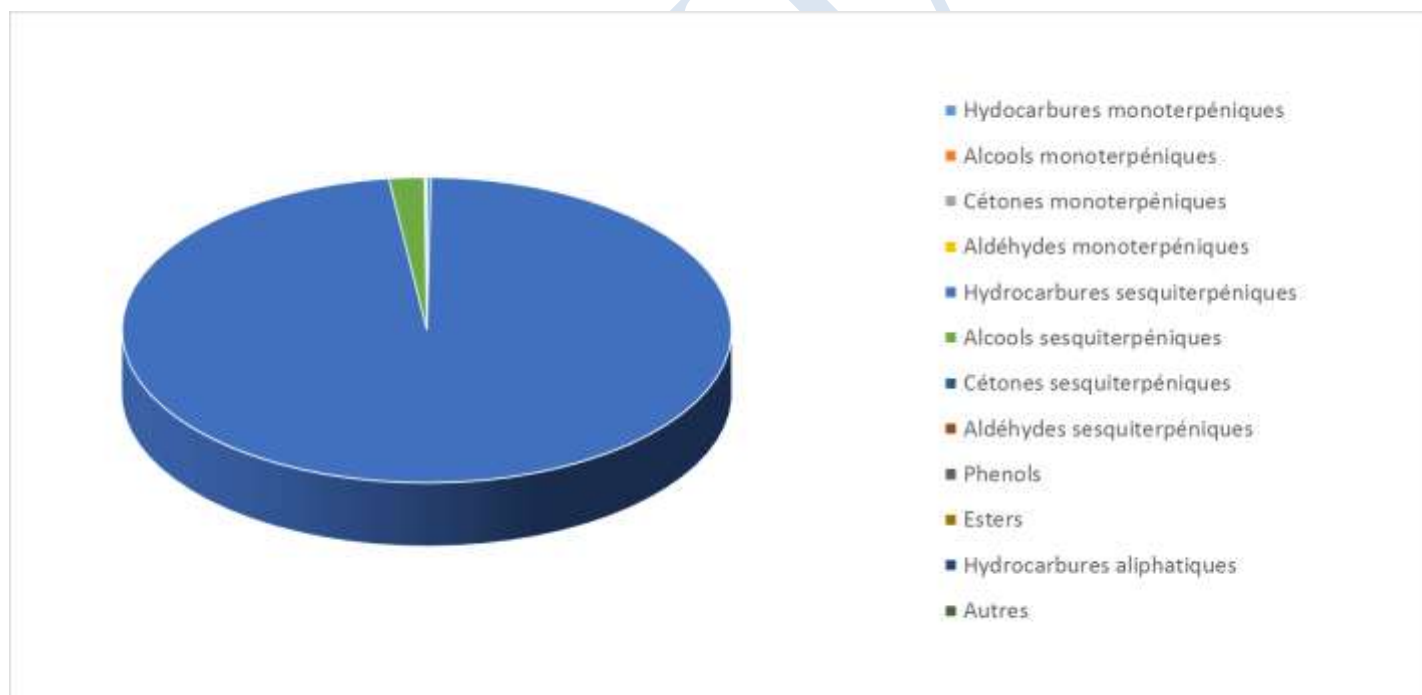


 FLORIHANA JE INTERNATIONAL	ENREGISTREMENT DES BULLETINS ANALYTIQUES : CHROMATOGRAPHIE ESSENTIAL OIL CHROMATOGRAPHY SHEET RECORDS	7-2-ENR-005 v3	Page 1 sur 3
		Date d'application : 01/01/2013	
		Date de révision : 15/04/2022	

Date : 11/04/2023
 Référence produit / Product reference : FLE264
 Huile essentielle de / Essential oil of : Myrrhe / Myrrh
 Numéro de lot / Lot Number : C110423SO
 Densité à 20°C (g/cm³) / Density to 20°C (g/cm³) : 1.012
 Indice de réfraction / Refractive index : 1.5269
 Pouvoir rotatoire à 20°C / Optical rotation to 20°C : -115.85°
 Mode de culture / Culture mode : Sauvage / Wild
 Pays / Country : Somalie / Somalia
 Date de production / Production date : 03/2023
 D.L.U. / Shelf life : 04/2028
 Mode d'extraction / Extraction mode : Distillation à la vapeur / Steam distillation
 % Bio / % Organic : 100%
 Nom Latin / Latin Name : Commiphora myrrha
 Parties utilisées / Used Parts : Résine / Resin



Molécule	%
ALPHA-PINENE	0.020
LIMONENE *	0.060
TRANS-BETA-OCIMENE	0.120
ALPHA-CUBEBENE	0.020
DELTA-ELEMENE	0.770
BICYCLOELEMENE	0.030
BETA-ELEMENE	3.410
ALPHA-YLANGENE	0.010
ALPHA-COPAENE	0.060
ALPHA-BOURBONENE	0.030
BETA-BOURBONENE	0.260
CYPERENE	0.040
ALPHA-GURJUNENE	0.010
GAMMA-GURJUNENE	0.030
BETA-CUBEBENE	0.020
ALPHA-CIS-BERGAMOTENE	0.010
ALPHA-TRANS-BERGAMOTENE	0.020
BETA-CARYOPHYLLENE	0.360
ALPHA-CARYOPHYLLENE	0.200
GUAIA-6,9-DIENE	0.010
AROMADENDRENE	0.020
CADINA-3,5-DIENE	0.020
ZONARENE	0.010
4,5-DI-EPI-ARISTOLOCHENE	0.040
GAMMA-SELINENE	0.130
BETA-SELINENE	0.390
ALPHA-SELINENE	0.430
DELTA-SELINENE	0.030
7-EPI-ALPHA-SELINENE	0.100
GAMMA-MUUROLENE	0.120
LEDENE	0.020
ACIPHYLLENE	0.010
GERMACRENE D	1.260
BICYCLOGERMACRENE	0.040
GERMACRENE B	2.410
BETA-BISABOLENE	0.120



DELTA-CADINENE	0.190
GAMMA-CADINENE	0.340
CADINA-1,4-DIENE	0.010
SESQUITERPENE	0.270
SESQUITERPENONE	0.040
SELINA-3,7-DIENE	0.080
ALPHA-AMORPHENE	0.030
CURZERENE	28.570
ALPHA-CALACORENE	0.010
OXYDE DE CARYOPHYLLENE	0.040
CUBEBOL	0.010
EPI-CUBENOL	0.110
CUBENOL	0.020
ELEMOL	0.140
TRANS-BETA-ELEMENONE	0.070
FURANODIENE	0.140
FURANOEUDESMA-1,3-DIENE	37.900
LINDESTRENE	8.670
GAMMA-EUDES MOL	0.030
ALPHA-EUDES MOL	0.040
BETA-EUDES MOL	0.100
EUDESMA-7(11)-EN-4-OL	0.070
T-CADINOL	0.830
ALPHA-CADINOL	0.020
2-METHYL-8,12-EPOXYGERMACRA-1,4,7,11-TETRAENE	5.320
SESQUITERPENOL	0.080
BETA-NOOTKATOL	0.230
ISOSPATHULENOL	0.010
2-METHOXYFURANOQUAIA-9-EN-8-ONE	0.060
ACETYL-8,12-EPOXYGERMACRA-1,4,7,11-TETRAENE	0.890
Total	94.960

* = Substance(s) allergène(s) / allergen(s)
 ** = Substance(s) classée(s) CMR / Substance(s) classified as CMR

