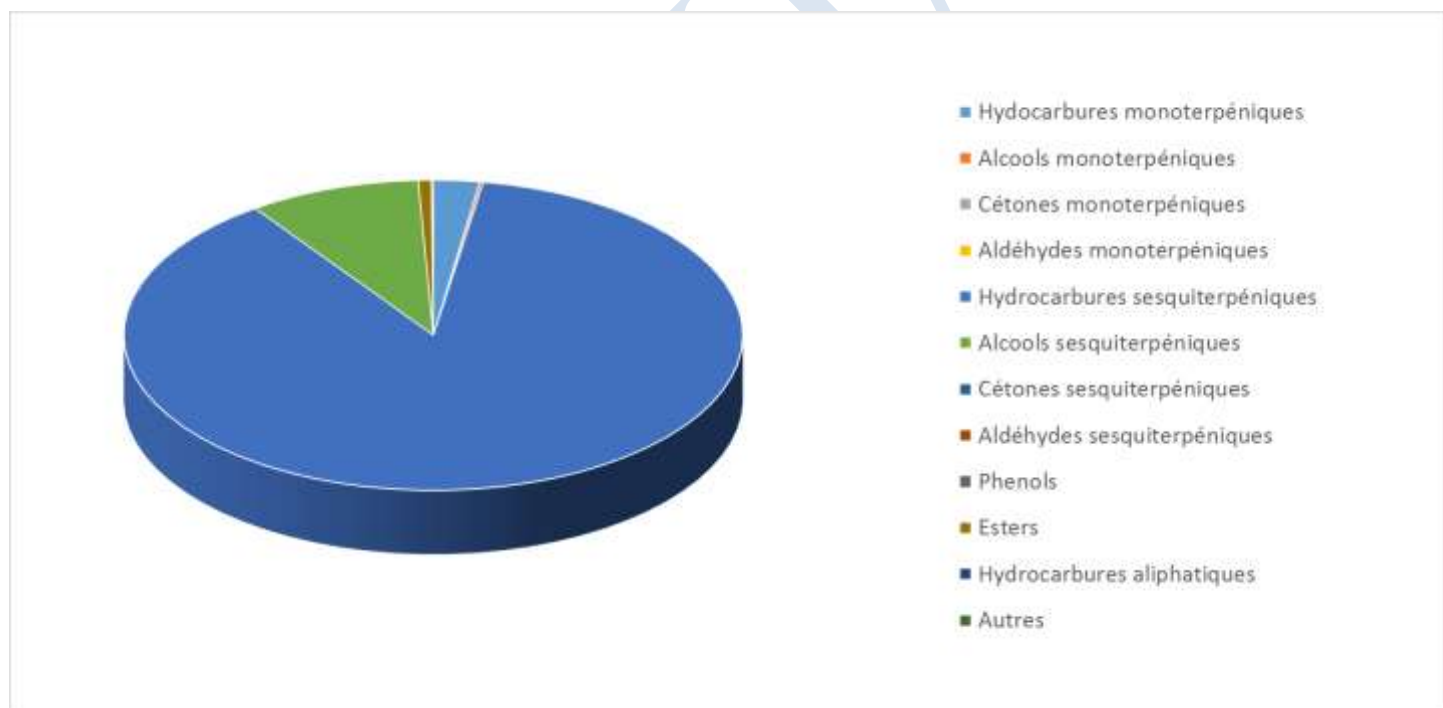


Date : 30/05/2023
 Référence produit / Product reference : FLJ118
 Huile essentielle de / Essential oil of : Manuka
 Numéro de lot / Lot Number : AZ260523AU
 Densité à 20°C (g/cm³) / Density to 20°C (g/cm³) : 0.961
 Indice de réfraction / Refractive index : 1.502
 Pouvoir rotatoire à 20°C / Optical rotation to 20°C : -16.8°
 Mode de culture / Culture mode : Sauvage / Wild
 Pays / Country : Australie / Australia
 Date de production / Production date : 01/2023
 D.L.U. / Shelf life : 02/2028
 Mode d'extraction / Extraction mode : Distillation à la vapeur / Steam distillation
 % Bio / % Organic : 100%
 Nom Latin / Latin Name : Leptospermum scoparium
 Parties utilisées / Used Parts : Feuilles / Leaves



Molécule	%
ALPHA-THUJENE	0.013
ALPHA-PINENE	0.818
BETA-PINENE	0.194
BETA-MYRCENE	0.344
PARA-CYMENE	0.083
LIMONENE *	0.073
1,8-CINEOLE (EUCALYPTOL)	0.130
GAMMA-TERPINENE	0.070
TERPINOLENE	0.021
TERPINENE-4-OL	0.032
ALPHA-TERPINEOL	0.046
2-METHYL-BUTANOATE DE 3-METHYLBUTYLE	0.021
3-METHYL-BUTANOATE DE 3-METHYLBUTYLE	0.072
3-METHYL-BUTANOATE DE 2-METHYLBUTYLE	0.038
3-METHYL-BUTANOATE DE 3-METHYLBUT-3ENYLE	0.090
LINALOL *	0.050
2,7-DIMETHYLOCTANE-3,5-DIONE	0.038
2-METHYL-2-BUTENOATE DE 3-METHYLBUTYLE	0.103
TIGLATE DE 3-METHYL-BUTYLE	0.021
UNDEC-6-ENE-2-ONE	0.069
BICYCLOELEMENE	0.039
BETA-ELEMENE	1.986
ALPHA-CUBEBENE	2.631
ALPHA-YLANGENE	0.275
BETA-YLANGENE	0.071
ALPHA-COPAENE	3.811
BETA-BOURBONENE	0.068
3-METHYLBUTANOATE DE BENZYLE	0.154
ALPHA-GURJUNENE	0.760
BETA-GURJUNENE	0.078
BETA-CARYOPHYLLENE	2.603
ALPHA-CARYOPHYLLENE	0.417
OXYDE DE CARYOPHYLLENE	0.851
AROMADENDRENE	1.315
CIS-MUUROLA-3,5-DIENE	3.039
TRANS-MUUROLA-4(14),5-DIENE	0.532



ALLO-AROMADENDRENE	0.492
TRANS-CADINA-1,(6)4-DIENE	1.892
DELTA-CADINENE	4.300
GAMMA-CADINENE	0.587
TRANS-CADINA-1,4-DIENE	5.664
ALPHA-AMORPHENE	0.357
BETA-SELINENE	10.177
ALPHA-SELINENE	10.141
DELTA-AMORPHENE	0.248
CIS-CALAMENENE	11.175
FLAVESONE	3.170
BETA-CALACORENE	0.514
GAMMA-CALACORENE	0.123
SPATHULENOL	0.486
GLOBULOL	0.225
VIRIDIFLOROL	0.313
ISO-LEPTOSPERMONE	4.918
LEPTOSPERMONE	12.296
1-EPI-CUBENOL	1.176
GAMMA-EUDES MOL	0.600
ALPHA-EUDES MOL	1.606
ALPHA-MUUROLOL	1.228
NEO-INTERMEDEOL	0.592
SELIN-11-EN-4-OL	0.037
CADALENE	0.323
GRANDIFLORENE	0.406
CIS-14-NOR-MUUROLOL-5-ENE-4-ONE	0.144
Total	94.146

* = Substance(s) allergène(s) / allergen(s)

** = Substance(s) classée(s) CMR / Substance(s) classified as CMR

